

FIGURE -1

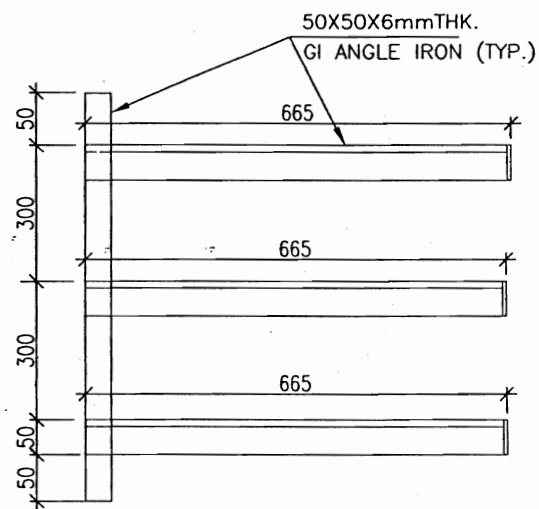


FIGURE -2

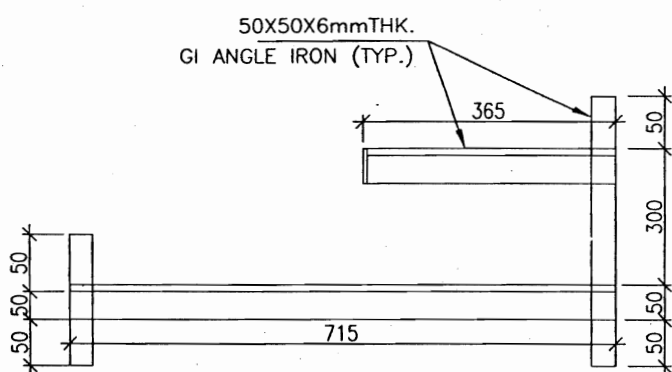


FIGURE -3

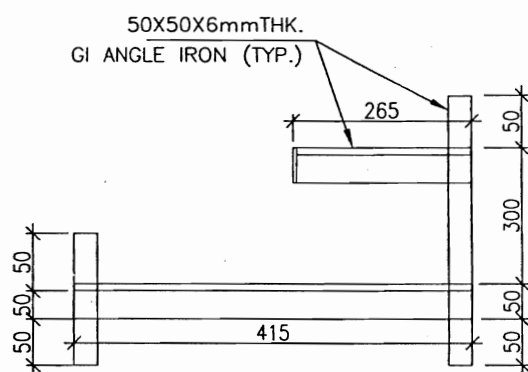
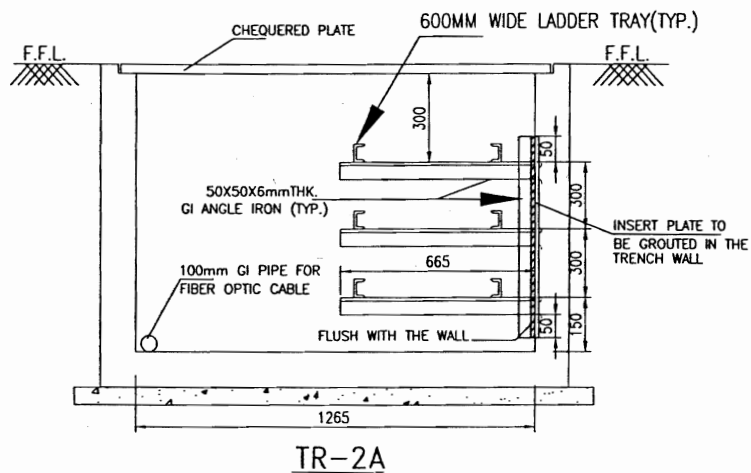
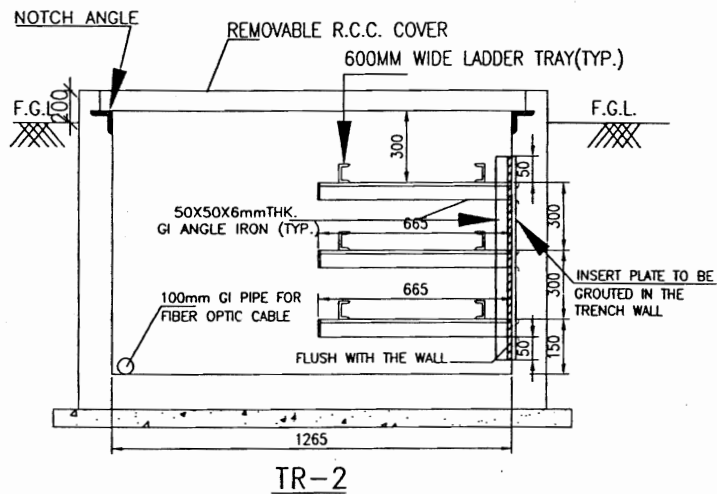
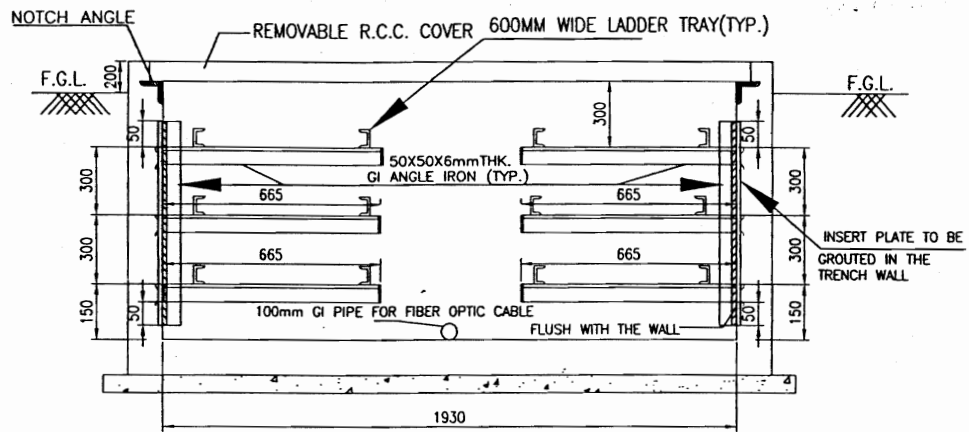


FIGURE -4

NOTE:-

1. ALL DIMENSIONS ARE IN MM.

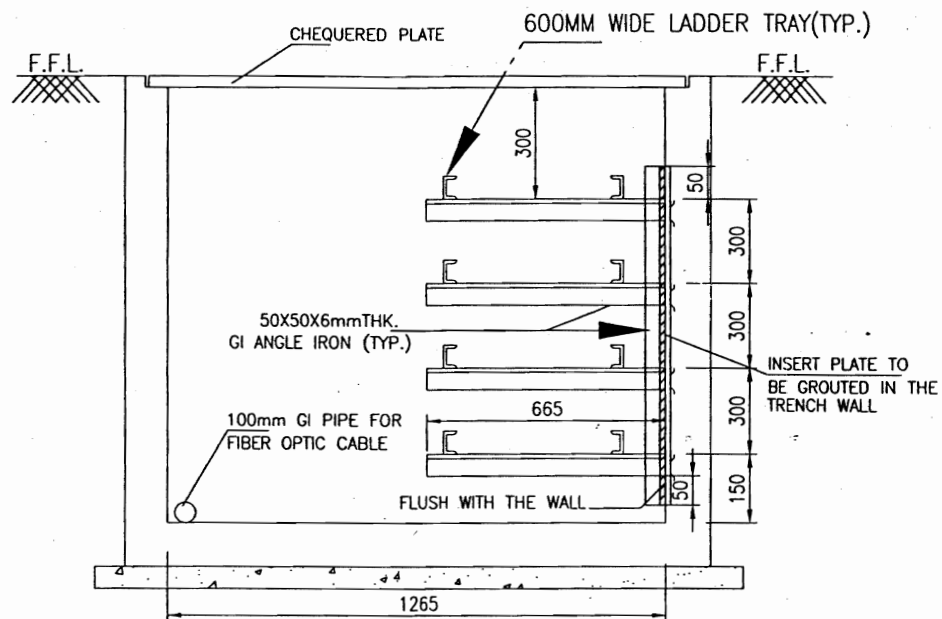
Scm'w



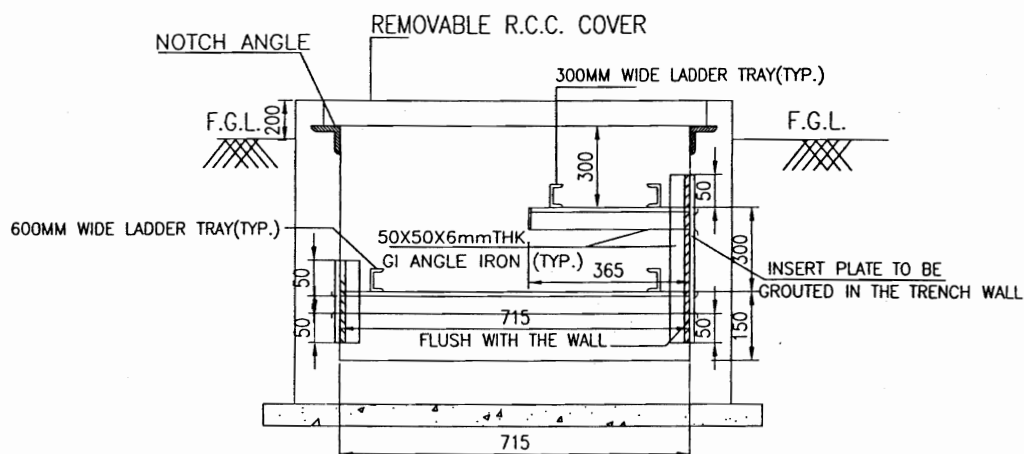
NOTE:-

1. ALL DIMENSIONS ARE IN MM.

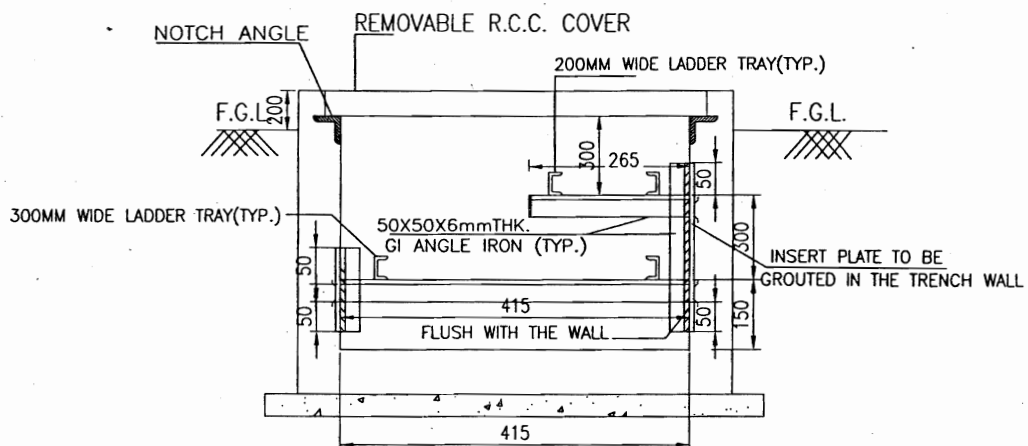
Semi' M



TR-2B



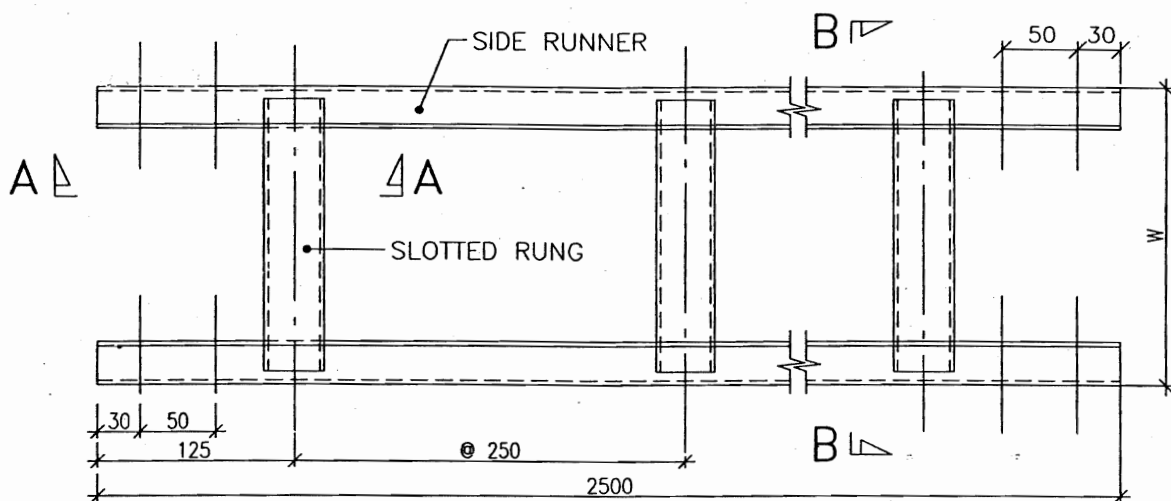
TR-3



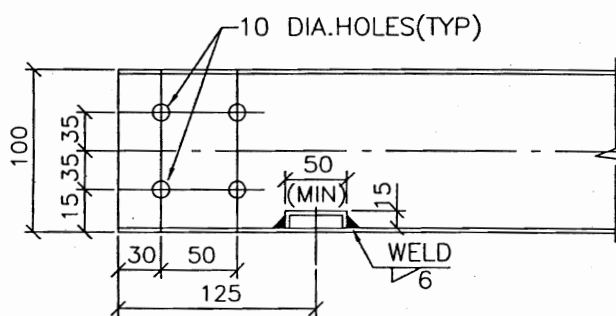
TR-4

NOTE:-

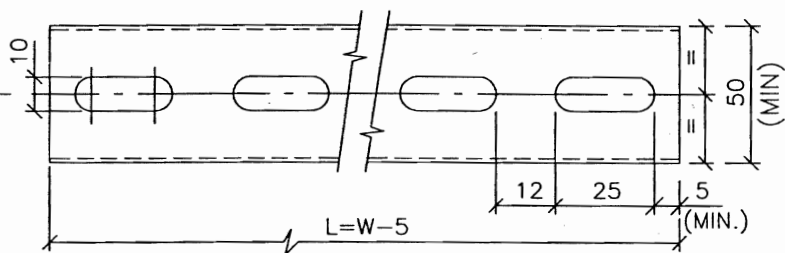
1. ALL DIMENSIONS ARE IN MM.



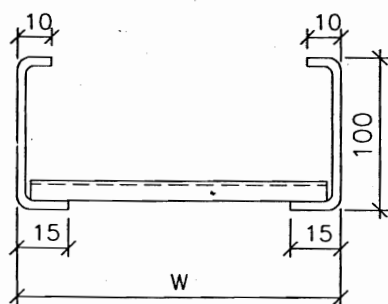
LADDER TYPE CABLE TRAY



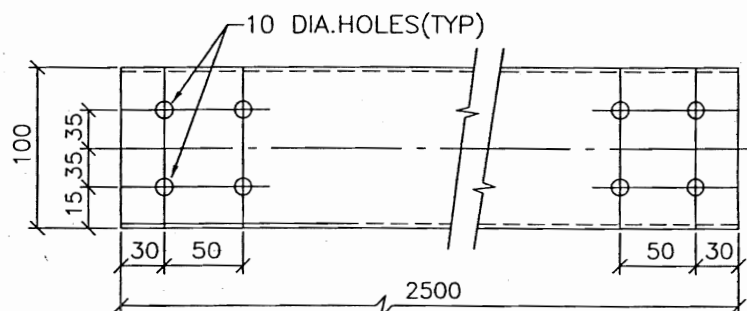
SEC. A-A



SLOTTED RUNG



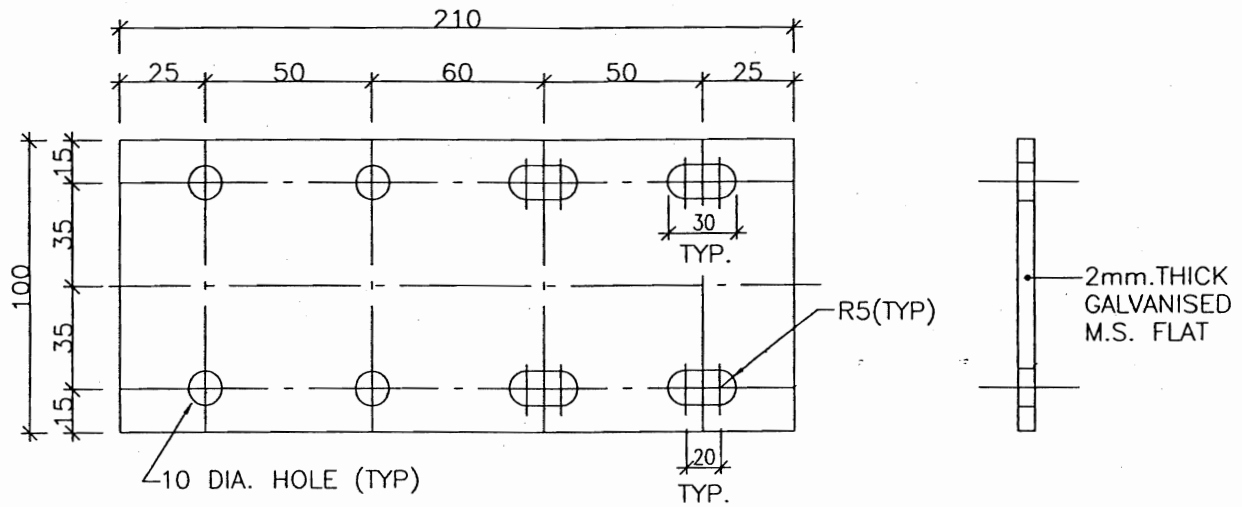
SEC. B-B



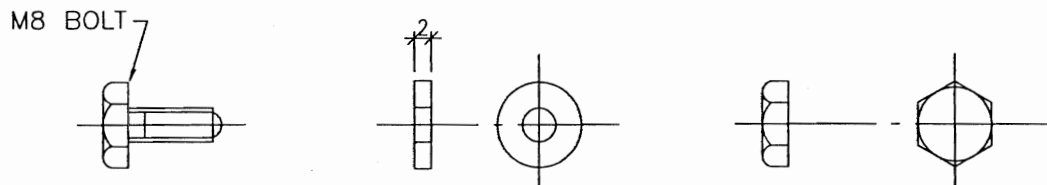
SIDE RUNNER

W	200	300	600
L	195	295	595

Sensu



SIDE COUPLER PLATE



M8 BOLT, WASHER & NUT

(FOR CABLE TRAY JOINT)

NOTE:-

1. ALL DIMENSIONS ARE IN MM UNLESS OTHERWISE SPECIFIED.
2. LADDER TYPE CABLE TRAY SHALL BE FABRICATED FROM MILD STEEL WITH 2MM THICK.
3. SIDE COUPLER PLATE SHALL BE FABRICATED FROM 2MM THICK GALVANISED M.S. FLAT.
4. ALL NUTS, BOLTS AND WASHERS SHALL BE ZINC PASSIVATED.
5. CABLE TRAY ASSEMBLIES SHALL BE FABRICATED AS PER IS : 1079 GRADE "O" / IS : 2026 GRADE "A". OTHERWISE SPECIFIED.
6. CABLE TRAYS, SIDE COUPLER PLATES & CABLE RACK ASSEMBLIES SHALL BE HOT DIP GALVANISED AS PER IS : 2629
7. FABRICATION TOLERANCE ± 5 MM TO BE ALLOWED.
8. TOLERANCE ON THICKNESS ± 0.2 MM TO BE ALLOWED. OTHERWISE SPECIFIED.
TOLERANCE ON DIMENSION - AS PER IS 1852.

Sendu